



Interior Features

- Large 1 bedroom 1 bath, 2 bedroom 2 bath apartments and 2 bedroom 1.5 bath townhomes available
- Euro Washer / Dryer Combo Machine!
- Spacious walk-in closets
- Large rooms
- Individual heat and air-conditioning
- Ceiling fans
- Mini-blinds
- Dishwasher and garbage disposal
- Cable & Telephone Ready

Community Amenities

- Just Minutes to the OU Campus
- "Campus CART" Stop
- Two sparkling swimming pools
- Beautiful Stone Accents
- Convenient access to OU Campus, shopping, dining and entertainment
- Two Clothes Care Centers
- 24-hour emergency maintenance
- Professionally managed

Welcome to Landry Apartment Homes, located in the alluring city of Norman, OK. Our charming & newly renovated community offers 1 & 2-bedroom apartment homes with spacious floor plans. Looking for convenience? Then look no further! We are located on West Lindsey Street & have immediate access to I-35, making the commute to Oklahoma City trouble-free! Our community is conveniently located near multiple shopping, dining, & entertainment venues, all within walking distance from us. The Landry offers a variety of amenities including two on-site laundry facilities, two sparkling pools, two CART stops located on property, & so much more! The local schools in our area are: Monroe Elementary, Alcott Middle School, Norman High, and we are also within walking distance to the University of Oklahoma.

After undergoing renovations this past year, we have revamped all our apartments with brand new carpet, laminate flooring, counter tops, brand new appliances, & so much more! One of the most unique additions is the state of the art, Euro Washer/Dryer combo machine that washes & dries your clothes at the click of a button!

What are you waiting for?! Call or come by today to sign the lease on your new home!! **YOU'RE GOING TO LOVE IT HERE!**

Professionally Managed by



1304 Wylie Road
Norman, OK 73072
(405) 622-8501

LiveAtLandry.com

*In Select Apartment Homes.
Availability may be limited.

1 Bedroom / 1 Bath 685 Sq. Ft.*

RENT _____

DEPOSIT _____

2 Bedroom / 2 Bath 901 Sq. Ft.*

RENT _____

DEPOSIT _____

2 Bedroom / 1.5 Bath 1,116 Sq. Ft.*

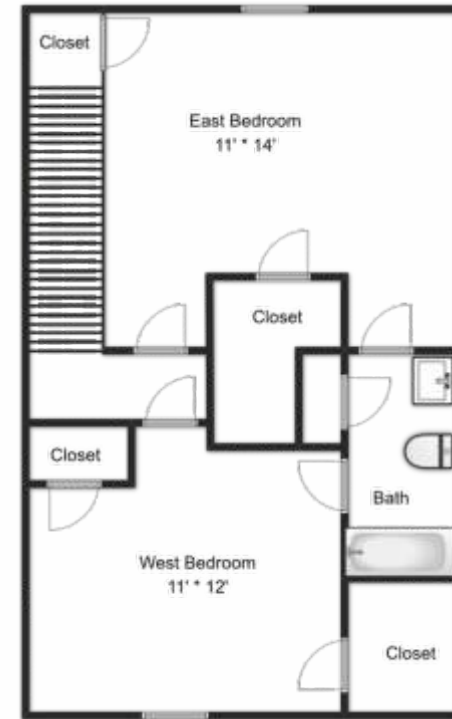
RENT _____

DEPOSIT _____

Townhome



Lower Level



Upper Level



1304 Wylie Road
 Norman, OK 73072
 (405) 622-8501
 LiveAtLandry.com

* All Square Footage is Approximate Only.

